



Carrytank CTK 900

Polyethylene tank for the transport of diesel fuel (900 litres)



Description

Carrytank® 900 a polyethylene tank for the transport of diesel fuel (900 litres) with lockable lid.

The new tank with patent pending has successfully passed the toughest stress tests in order to obtain the ADR/RID/ADN and IMDG approval for fuel transport:

- Drop test
- Vibration test
- Hydraulic pressure test
- Pneumatic pressure test
- Full load lifting test
- Stackability test at full load

Since it is a tank intended for the transport, the design research has also focused on logistics, with the aim of making its handling faster and more efficient. For this reason, the tank, in addition to the forklift pockets, is also equipped with 4 lifting lugs for lifting tank at full load from above, ensuring full stackability during the storage.

Main features

Made in linear polyethylene, it is equipped with the following fittings: reinforced lockable lid, filling aluminium plug for Diesel compartment, with integrated air vent device, fuel transfer unit, built-in forklift pockets for lifting fully loaded from below, lifting lugs for lifting fully loaded from above and for fixing fastening straps, new plug-in quick connections. All the fittings are made of aluminium or materials compatible with Diesel fuel.

Outfittings

Standard configuration model AC:

- DC fuel transfer pump, mod. DEVIL40 (12 or 24V), flow rate 40 l/min

Configuration model DF:

- DC fuel transfer pump, mod. DPUMP (12 or 24V), flow rate 60 l/min

Configuration model BC:

- AC fuel transfer pump, mod. DEVIL55, flow rate 55 l/min.
- 2 m of power cable with Schuko plug for connection to 230V supply

Configuration model ZC:

- DC fuel transfer pump, mod. 12/24V, flow rate 35/70 l/min

Set-ups common to all configurations:

- 4 m of hose
- Automatic nozzle for Diesel
- 4 m of battery power cable and connection plug.
- Optional: digital flow meter for Diesel fuel, mod. M24
- Optional: water separator filter for Diesel fuel

Accessories



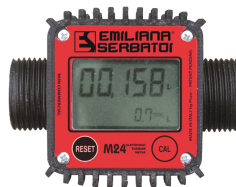
Strainer filter stainless steel

For diesel and gasoline. Impurity filtration. Filter capacity 60µm. Flow rate 50 l/min.



ES Filter

For diesel and gasoline. Water absorption and impurity filtration. Filter capacity 10µm. Flow rate 70 l/min.



Digital fuel meter, mod. M24, for Diesel Fuel



Filter Water captor 70

For diesel and gasoline. Water absorption and impurity filtration. Filter capacity 30µm. Flow rate 70 l/min.



Lead-acid battery with battery charger (European plug type C)



Manganese 12V battery with battery charger (European plug type C) and battery slot



Drip Tray



Retention Basin for Carrytank

Retention basin for ground use, 100% tank's volume capacity, made in carbon steel.

Technical data

Model	Capacity (lt)	Width (mm)	Depth (mm)	Highness (mm)	Thickness (mm)
CTK900	900	1,530	1,150	910	10

Loading Plan

Model	Container 20'	Container 40'	Container 40' HC	Std truck 2700h mm
CTK900	14	30	30	34

Product code

CT	X	X	X	X
Model CT = Carrytank	Fuel K = Diesel homologated	Volume 900 = 900 l	Pump A = 40 l/min B = 55 l/min D = 60 l/min Z = 40 l/min dual voltage 12/24V	Nozzle C = Automatic 60 l/min F = Automatic 80 l/min