



Carrytank CTK 330

Polyethylene tank for fuel transport

NEW



Description

Carrytank CTK 330 is the new 330-liter polyethylene tank with padlockable lid for transporting gasoline or diesel. The CTK 330 is based on the long track record of ES in the development of tanks in the digital environment; the tank, made entirely of polyethylene, is capable of storing and transporting up to 330 liters of diesel fuel or gasoline in complete safety, complying with the tests required by ADR (road transport), IMDG (sea transport), AND (transport on inland waters) and RID (rail transport). The innovative aspect of the CARRYTANK® 330 is its design developed entirely in a digital environment, using a technology that originated with the CARRYTANK 900+100 and was fully developed within ES. It is designed and tested to withstand the pressure created during the transport of fuels and to ensure airtightness even after repeated drops under full load at every angle.

Main features

It is compatible with the most common filtration systems and comes with aluminum filling plug, safety valve, level gauge, transfer unit, forklift pockets for lifting, handles for lifting when empty, and recesses for securing straps to the support base. Diesel version is also available.

Outfittings

GASOLINE OUTFITTINGS

Configuration model EE:

- 12V Pump mod. EX50 12V ATEX Certified, flowrate 45 lit/min.
- 4 mt antistatic hose.
- ATEX automatic nozzle.
- 5 mt electrical cable with bipolar connector.
- 4 mt grounding cable with crocodile clamps.
- Optional: ATEX digital flow meter.
- Optional: water separator filter.

DIESEL FUEL OUTFITTINGS

Configuration model AC:

- DC fuel transfer pump, mod. DEVIL40 (12 or 24V), flow rate 40 l/min.
- 4 m of hose.
- Automatic nozzle.
- 6 m of battery power cable with bipolar connector for battery connection.
- Optional: digital flow meter, mod. M24.
- Optional: water separator filter.

Configuration model BC:

- AC fuel transfer pump, mod. DEVIL55 (230 V), flow rate 55 l/min.
- 4 m of hose.
- Automatic nozzle.
- 2 m of power cable with Schuko plug for connection to BC supply (Diesel fuel).
- Optional: digital flow meter, mod. M24.
- Optional: water separator filter.

Configuration model ZC:

- DC fuel transfer pump, mod. 12/24V, flow rate 35/70 l/min
- 4 m of hose.
- Automatic nozzle.
- 4 m of battery power cable with bipolar connector for battery connection.
- Optional: digital flow meter, mod. M24.
- Optional: water separator filter.

Configuration model DF:

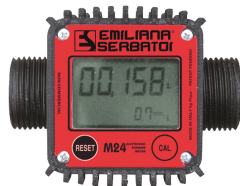
- DC fuel transfer pump, mod. DPUMP (12 or 24V), flow rate 60 l/min.
- 4 m of hose.
- Automatic nozzle.
- 6 m of battery power cable with bipolar connector for battery connection.
- Optional: digital flow meter, mod. M24.
- Optional: water separator filter.

Accessories



ES Filter

For diesel and gasoline. Water absorption and impurity filtration. Filter capacity 10µm. Flow rate 70 l/min.



Digital fuel meter, mod. M24, for Diesel Fuel



Filter Water captor 70

For diesel and gasoline. Water absorption and impurity filtration. Filter capacity 30µm. Flow rate 70 l/min.



Digital flow meter for gasoline K24 ATEX



Drip Tray

Technical data

Model	Capacity (lt)	Width (mm)	Depth (mm)	Highness (mm)	Thickness (mm)	Empty weight (kg)	Weight with pump unit (kg)
CTK330	330	1,295	885	655	11	53	65

Loading Plan

Model	Container 20'	Container 40'	Container 40' HC	Std truck 2700h mm
CTK330	30	66	88	100

Product code

CT	X	X	X	X
Model CT = Carrytank	Fuel K = Diesel and gasoline homologated	Volume 330 = 330 l	Pump A = 40 l/min E = Atex 50 l/min B = 55 l/min D = 60 l/min Z = 40 l/min dual voltage 12/24V	Nozzle F = Automatic 80 l/min C = Automatic 60 l/min E = Automatic Atex 60 l/min

Not all combinations are available

Approval



Transportable materials	Diesel / UNI1202 Gasoline / UNI1203
Classes ADR	3
Packaging group	II - III