



Carrytank 150

Polyethylene tank for fuel transport

NEW



Description

The CARRYTANK® 150, is a transportable tank for diesel produced in linear polyethylene with rotational molding, designed and conceived to be as compact as possible and to have the best external dimensions/useful capacity ratio existing on the market; this allows it to be used in pick-ups with or without a bed cover, the transport with all the most common vehicles and facilitates the shipment. Homologated version for diesel or homologated version for gasoline is available. AdBlue®/DEF version is also available.

Main features

The tank, despite its compact size, is equipped with:

- padlockable lid and reinforced closure
- aluminum filling plug
- safety valve
- transfer unit
- forklift pockets for lifting handles for lifting when empty
- recesses for securing straps to the support base
- level gauge
- inserts in aluminum or material compatible with Diesel fuel.

Outfittings

Standard configuration model AC:

- DC fuel transfer pump, mod. DEVIL40 (12 or 24 V), flow rate 40 l/min.
- 4 m of hose.
- Automatic nozzle.
- 6 m of battery power cable and clamps for battery connection.
- Optional: digital flow meter, mod. M24.
- Optional: water separator filter.

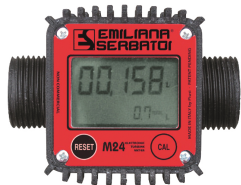
Standard configuration model AC (homologated version)

- DC fuel transfer pump, mod. DEVIL40 (12 or 24 V), flow rate 40 l/min.
- 4 m of hose.
- Automatic nozzle.
- 6 m of battery power cable with bipolar connector
- Optional: digital flow meter, mod. M24.
- Optional: water separator filter.

Gasoline version:

Tank made in a specific material able to confer safety warranty and chemical resistance to the aggression of all types of petrols. It is provided with a volumetric pump 30 l/min, 12 V battery operated ATEX certified and provided with 4 m of grounding wire and clamp. This tanks is also equipped with an automatic nozzle and 4 m of rubber hose for gasoline.

Accessories



Digital fuel meter, mod. M24, for Diesel Fuel



ES Filter

For diesel and gasoline. Water absorption and impurity filtration. Filter capacity 10µm. Flow rate 70 l/min.



Filter Water captor 70

For diesel and gasoline. Water absorption and impurity filtration. Filter capacity 30µm. Flow rate 70 l/min.



Digital flow meter for gasoline K24 ATEX



Drip Tray

Technical data

Model	Capacity (lt)	Width (mm)	Depth (mm)	Highness (mm)	Thickness (mm)	Empty weight (kg)	Weight with pump unit (kg)
CT150	150	985	585	465	9	23	35

Loading Plan

Model	Container 20'	Container 40'	Container 40' HC	Std truck 2700h mm
CT150	80	168	210	260

Product code

CT	X	X	X	X
Model	Fuel	Volume	Pump	Nozzle
CT = Carrytank	G = Diesel K = Diesel and gasoline homologated	150 = 150 l	A = 40 l/min J = 30 l/min Atex	C = Automatic 60 l/min E = Automatic Atex 60 l/min

Not all combinations are available

Approval



Transportable materials	Diesel / UNI1202 Gasoline / UNI1203
Classes ADR	3
Packaging group	II - III

Operational images

