

# BIO diesel

**EQUIPMENT FOR ANY BIODIESEL APPLICATION**



**PIUSI**

**BIO**  
*diesel*

**BIO**  
*diesel*





# BE HEALTHIER GREENER ANY BIODIESEL

Counting on the well-rooted experience of more than 70 years of history in the fluid handling sector, PIUSI has developed a dedicated range of equipment suitable for transferring, measuring and dispensing ANY BIODIESEL available on the market.

According to a recent survey\*, around 60% of interviewed declared that are not sure about the blending rate of the Biodiesel that are using within their activities. To avoid any possible misunderstanding or doubt, all the PIUSI pumps, nozzle, meters and dispenser of the ANY BIODIESEL range works at the maximum efficiency with ANY BLEND:

- avoiding any possible breakdown due to the usage of not-clear mixing;
- reducing time and costs associated to the purchase of specific equipment;
- guaranteeing the same professional performance and top-quality of all PIUSI equipment;
- PIUSI range is suitable for Biodiesel no matter blend rate, raw material type, nor creation process. Valid for Biodiesel made from erapeseed oil, palm oil, used cooking oil, soya oil, animal fats and sunflower oil.

## Did you know?

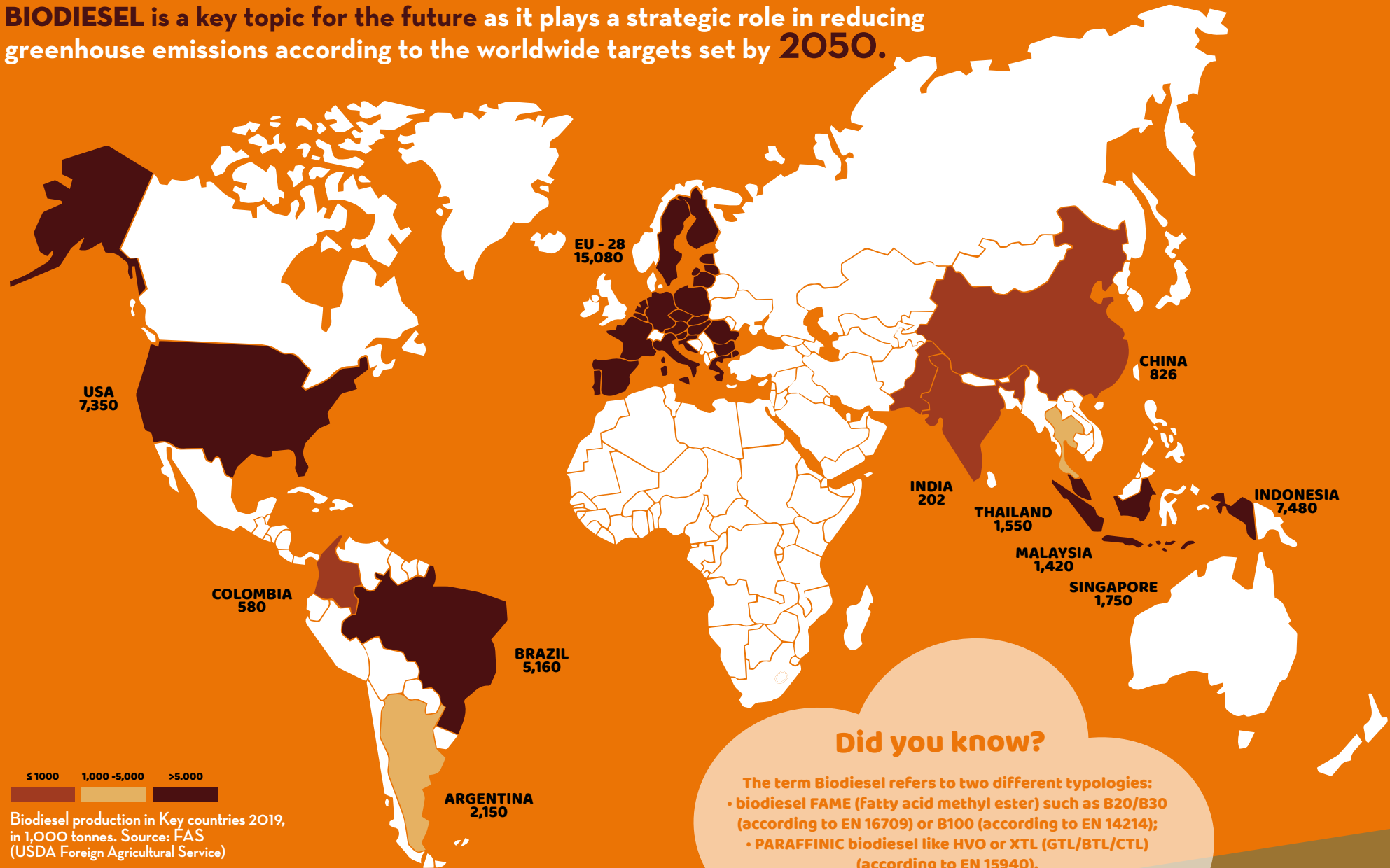
Standard diesel can contain up to 7% of Biodiesel: that's why it's known as B7. B20 or B100 means that the percentage of biodiesel is 20% or 100% OF FUEL PRODUCED FROM RENEWABLE RAW MATERIALS, PRIMARILY FROM RAPESEED.

**What are you waiting for?  
Be healthier. Be greener. Be ANY BIODIESEL.**

\*PIUSI survey on market

# BIODIESEL: AN OVERVIEW

**BIODIESEL** is a key topic for the future as it plays a strategic role in reducing greenhouse emissions according to the worldwide targets set by **2050**.



Legend: ≤1000, 1,000-5,000, >5,000  
 Biodiesel production in Key countries 2019, in 1,000 tonnes. Source: FAS (USDA Foreign Agricultural Service)

**Did you know?**

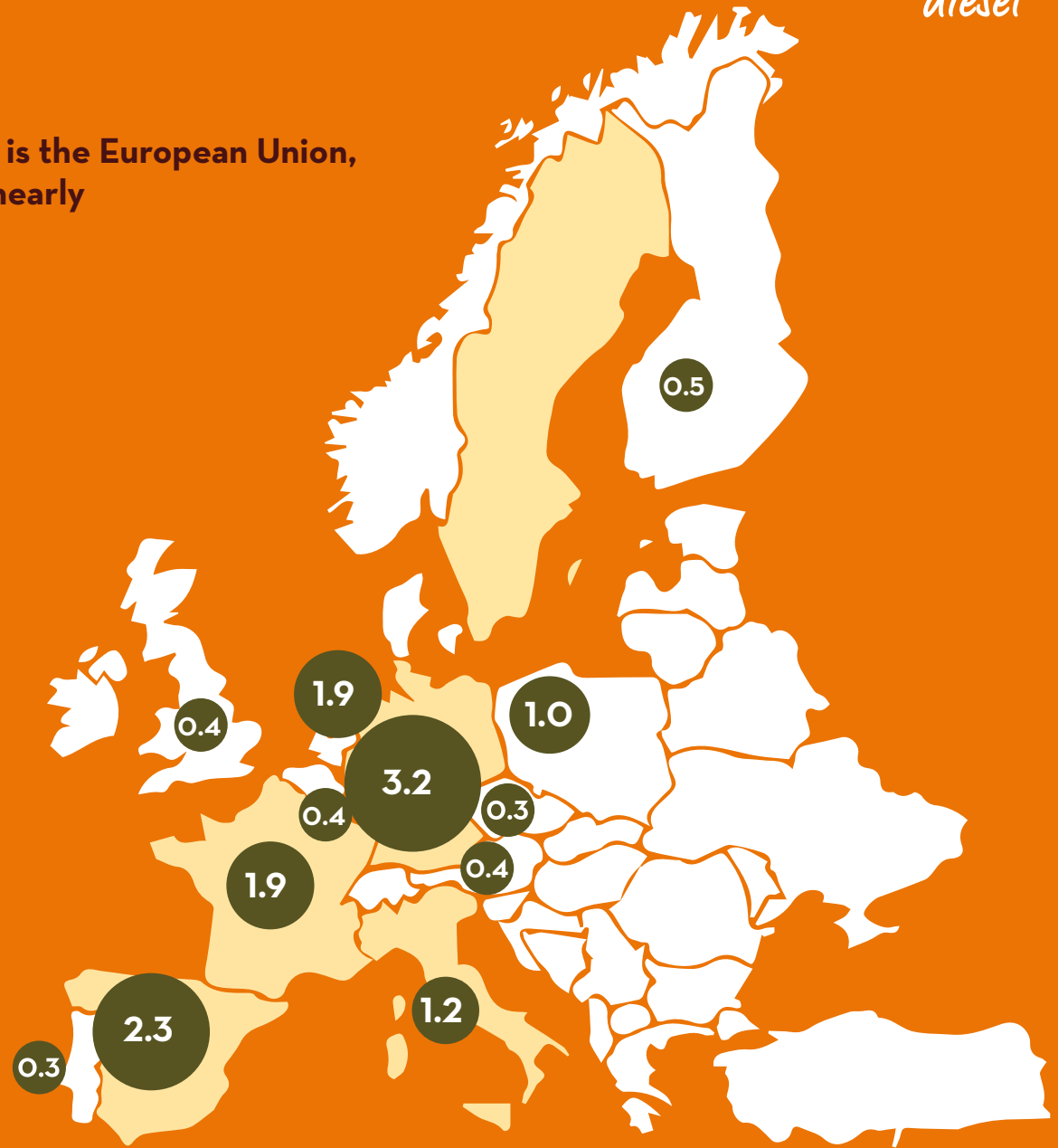
The term Biodiesel refers to two different typologies:

- biodiesel FAME (fatty acid methyl ester) such as B20/B30 (according to EN 16709) or B100 (according to EN 14214);
- PARAFFINIC biodiesel like HVO or XTL (GTL/BTL/CTL) (according to EN 15940).

The single most important Biodiesel producer is the European Union, which accounts for **33%** of global output of nearly **46 MILLION TONNES IN 2019**.

In the EU, Biodiesel is the most consumed renewable energy in the transport sector. The top 5 consumers are: Germany, France, Spain, Italy and Sweden (2020).

Together they account for **64% OF THE TOTAL EU BIODIESEL** consumption in the transport sector.



Biodiesel production in key EU countries, in 2019. In million tonnes. Source: FAS (USDA Foreign Agricultural Service)





# ANY BIODIESEL RANGE: PUMPS

All our solutions easily suit a variety of applications. Ready-to-use, versatile and handy equipment to manage safely refueling operations: pumps, meters, nozzles and dispensers.

## PANTHER AC BIO

Versatile self-priming rotary electric vane transfer pump particularly suitable for dispensers, fixed fuel transferring system and other industrial applications. It is equipped with a by-pass valve and an incorporated filter to stop impurities.



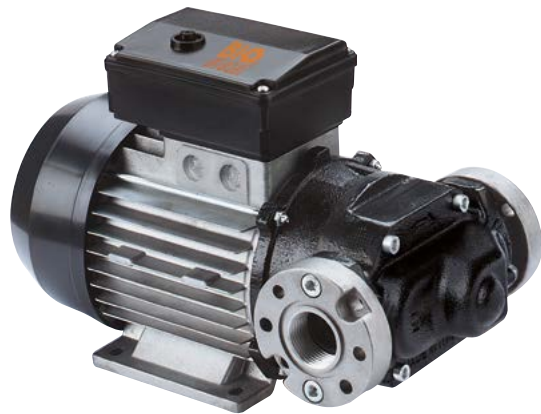
**FLOW RATE:  
UP TO 72 L/MIN**

- AC 230 V
- Continuous duty cycle
- Integrated filter
- Built-in bypass valve
- Self priming

# E120 BIO

Self-priming rotary electric vane pump, compact and easy to install, suitable to meet all those use requirements needing a high-performance and long lasting product. The sturdy structure along with the top-quality components allow its use at several working temperatures.

**FLOW RATE:  
UP TO 100 L/MIN**



- AC 230 V
- Continuous duty cycle
- Motor thermal protection
- Vane rotor
- Integrated by-pass valve
- Long lasting low speed motor (1450 rpm)
- Self priming

# BP3000 BIO

Long-lasting, self-priming vane pump. Powerful, versatile and compact, it is equipped with a built-in by-pass valve. It represents the core of the PIUSI range of pumps for on-board applications.

**FLOW RATE:  
UP TO 50 L/MIN**



- DC 12V
- 30 min ON / 30 min OFF duty cycle
- Vane rotor
- Self-priming up to 6 meters
- Built-in bypass valve







# ANY BIODIESEL RANGE: METERS

When precision matters, PIUSI is protagonist with a top-quality range of mechanical and electronic meter to precisely measure any quantity of Biodiesel dispensed with the maximum accuracy and repeatability.

## K33 BIO

Reliable, easy to install and to calibrate, K33 BIO is equipped with a nutating disk that allows it to be installed in all four flow directions.

The display shows up to three digits.



**ACCURACY: ± 1%**

- Repeatability: 0,3%
- Flow rate: 20 -120 l/min
- Max operating pressure: 3,5 bar
- Nutating disk system



# K150 BIO

Expressly engineered to meet the market requirements of a meter suitable for flow rates up to 150 l/min, K150 BIO features an aluminium cover and a sturdy body that make this meter suitable for a wide arrange of application. It can be installed everywhere thanks to the (optional) 1,5" flange kit.



**ACCURACY: ± 1%**

- Repeatability: 0,3%
- Flow rate: 25 -150 l/min
- Max operating pressure: 3,5 bar
- Nutating disk system
- Metallic cover

# K24-A

Thanks to its structural features, PIUSI K24-A is suitable for ANY BIODIESEL. The famous turbine digital flow meter by PIUSI is easy to install in-line or at the end of a delivery pipe, it is equipped with a rotatable display.



**ACCURACY: ± 1%**

- Repeatability: 0,2%
- Flow rate: 7 -120 l/min
- Max operating pressure: 20 bar
- Rotable display
- Bi-directional
- Turbine digital meter





# ANY BIODIESEL RANGE: DISPENSERS

Set up your Biodiesel refueling area thanks to the top-performance dispenser ST and BATTERY KIT by PIUSI: an all-in-one equipment for all applications.

## Did you know?

The ANY BIODIESEL range is 100% Made in PIUSI: top-quality materials and performance, but greener!

## ST BIO

This dispenser is particularly indicated for all applications in which a filtration is required. The station integrate the Biodiesel filter, the PANTHER AC BIO or E120 BIO pumps and the mechanical meter K33 BIO/K150 BIO.



### FLOW-RATE: UP TO 70 L/MIN

- PANTHER 72 BIO, 230V AC version
- Mechanical Meter K33 BIO - Accuracy: +/- 1%
- Automatic nozzle A70 BIO
- Biodiesel Filter
- 3/4", 6m dispensing hose
- Nozzle support

### FLOW-RATE: UP TO 100 L/MIN

- E120 BIO, 230V AC version
- Mechanical Meter K150 BIO - Accuracy: ± 1%
- Automatic nozzle A120 BIO
- Biodiesel Filter
- 1", 6m dispensing hose
- Nozzle support

## BATTERY KIT BIO

The PIUSI BATTERY KIT is a portable transfer unit with a self-priming electric vane pump, specifically engineered for mobile applications.



### FLOW RATE: UP TO 50 L/MIN

- BP3000 BIO, 12V DC version
- Vertical ports
- Electronic Meter K24-A
- Accuracy: ± 1%
- Manual Nozzle SELF 2000 BIO
- 3/4", 4m hose





# ANY BIODIESEL RANGE: THE PERFECT SOLUTION FOR ANY BLENDING!

The ANY BIODIESEL range is available worldwide through a professional network of authorized dealers.

Get in touch with our local partner to order your dispenser or contact PIUSI for further information.





**PIUSI**  
®

**piusi.com**

PIUSI S.p.a 46029 Suzzara (Mantova) Italy  
tel.+39 0376 534561 piusi@piusi.com