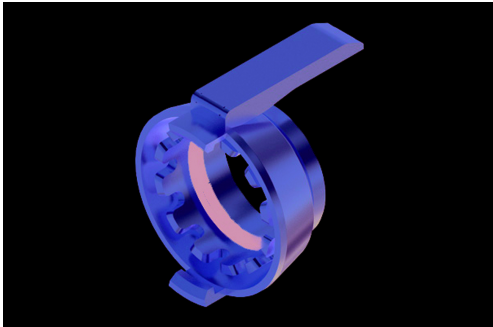


Ihre Konfiguration



Material	Brass
Thread seal	Polyurethane rubber (AU)
Coupling seal	Nitrile butadiene rubber (NBR)
Thread type	BSP-Female thread
Thread inch/mm	BSP 2"
Coupling seal type	GSD
AN mm (inch)	MK 50
Series	MK
max. operating pressure	16 bar / 232 PSI
Operation temperature	-20°C to +65°C