

Directional valves ► Mechanically operated

5/2-directional valve, Series CD04

► Qn= 900 l/min ► pipe connection ► Compressed air connection output: G 1/8



00134141

Version

Sealing principle

Working pressure min./max.

Ambient temperature min./max.

Medium temperature min./max.

Medium

Max. particle size

Oil content of compressed air

Compressed air connection

Spool valve, zero overlap

not lockable

Soft sealing

-0.95 bar / 10 bar

-20 °C / +65 °C

-20 °C / +65 °C

Compressed air

50 µm

0 mg/m³ - 1 mg/m³

according to ISO 228-1

Materials:

Housing

Seals

Die cast zinc; Polyamide, fiber-glass reinforced

Acrylonitrile butadiene rubber

	Actuating element+	Compressed air connection			Qn	Actuating force+ Min.	Material: Actuating control	Weight	Part No.
		Input	Output	Exhaust					
					[l/min]	[N]		[kg]	
	Plunger	G 1/8	G 1/8	G 1/8	900	70	Stainless steel	0.3	5634200100
	Roller	G 1/8	G 1/8	G 1/8	900	35	Polyoxymethylene	0.35	5634210100
	Hand lever, with detent, without detent	G 1/8	G 1/8	G 1/8	900	15	Polyoxymethylene	0.38	5634230100
	Hand lever	G 1/8	G 1/8	G 1/8	900	60	Aluminum	0.31	5634240100
	Rotary lever, with detent	G 1/8	G 1/8	G 1/8	900	20	Plastic; Stainless steel	0.56	5634250100
	Button	G 1/8	G 1/8	G 1/8	900	70	Polyoxymethylene	0.32	5634260100

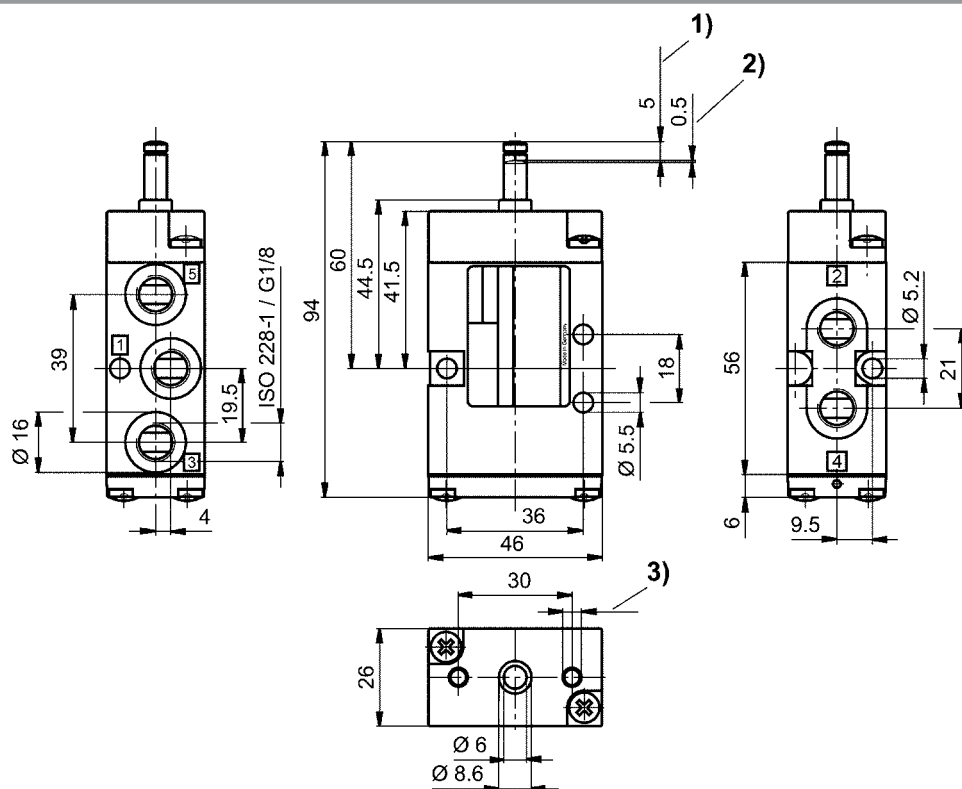
Part No.	Fig.
5634200100	Fig. 1
5634210100	Fig. 2
5634230100	Fig. 3
5634240100	Fig. 4
5634250100	Fig. 5
5634260100	Fig. 6

Nominal flow Qn at 6 bar and Δp = 1 bar

5/2-directional valve, Series CD04

► Qn= 900 l/min ► pipe connection ► Compressed air connection output: G 1/8

Dimensions, Fig. 1



1) Stroke 2) Overstroke 3) $\varnothing 4.5 - 12$ mm deep

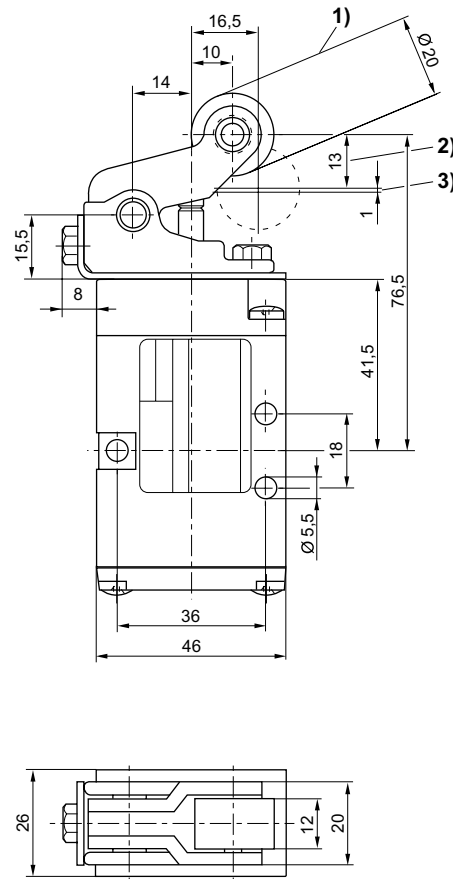
D563_420

Directional valves ► Mechanically operated

5/2-directional valve, Series CD04

► Qn= 900 l/min ► pipe connection ► Compressed air connection output: G 1/8

Dimensions, Fig. 2



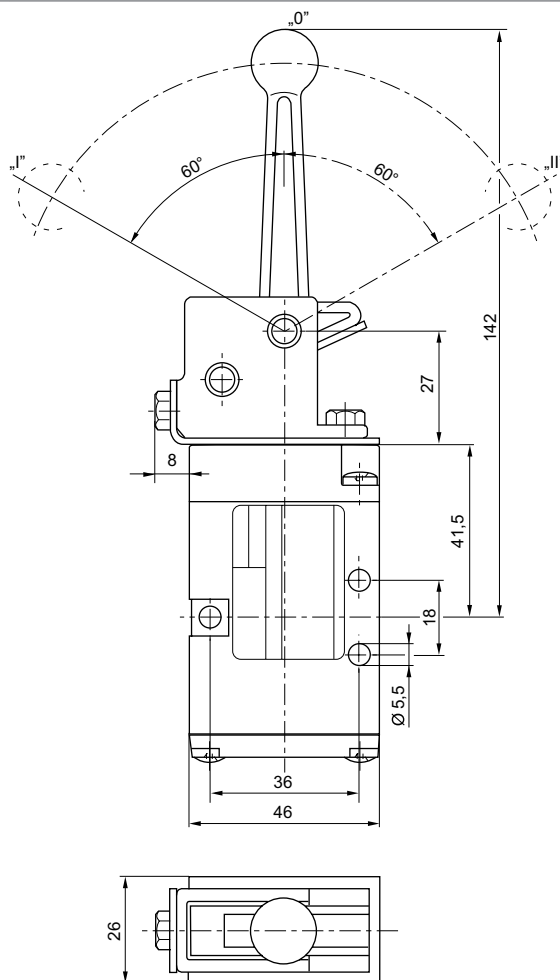
D563_421

1) approach angle of rollers max. 30° 2) stroke 3) overstroke

5/2-directional valve, Series CD04

 ► Q_n= 900 l/min ► pipe connection ► Compressed air connection output: G 1/8

Dimensions, Fig. 3



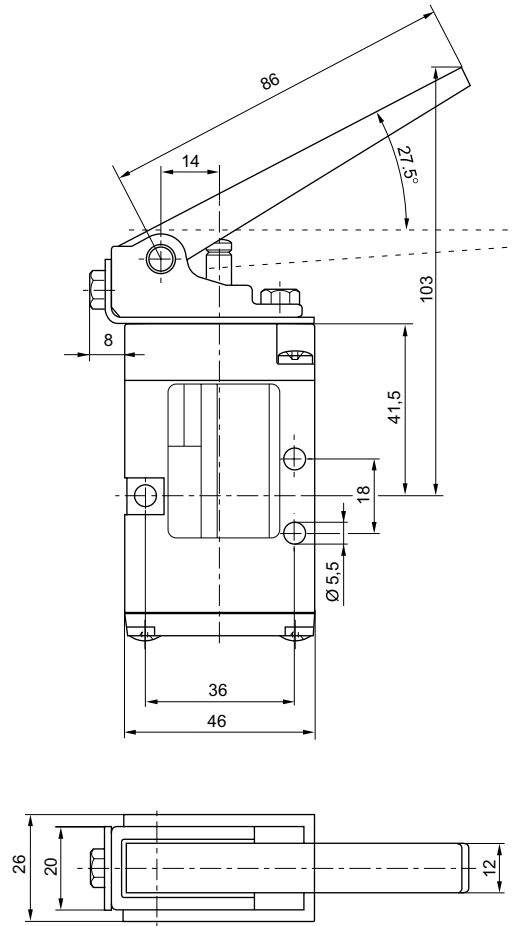
D563_421_a

Position 0: initial position, position I: with detent; manual return, position II: automatic spring return.

5/2-directional valve, Series CD04

► Qn= 900 l/min ► pipe connection ► Compressed air connection output: G 1/8

Dimensions, Fig. 4



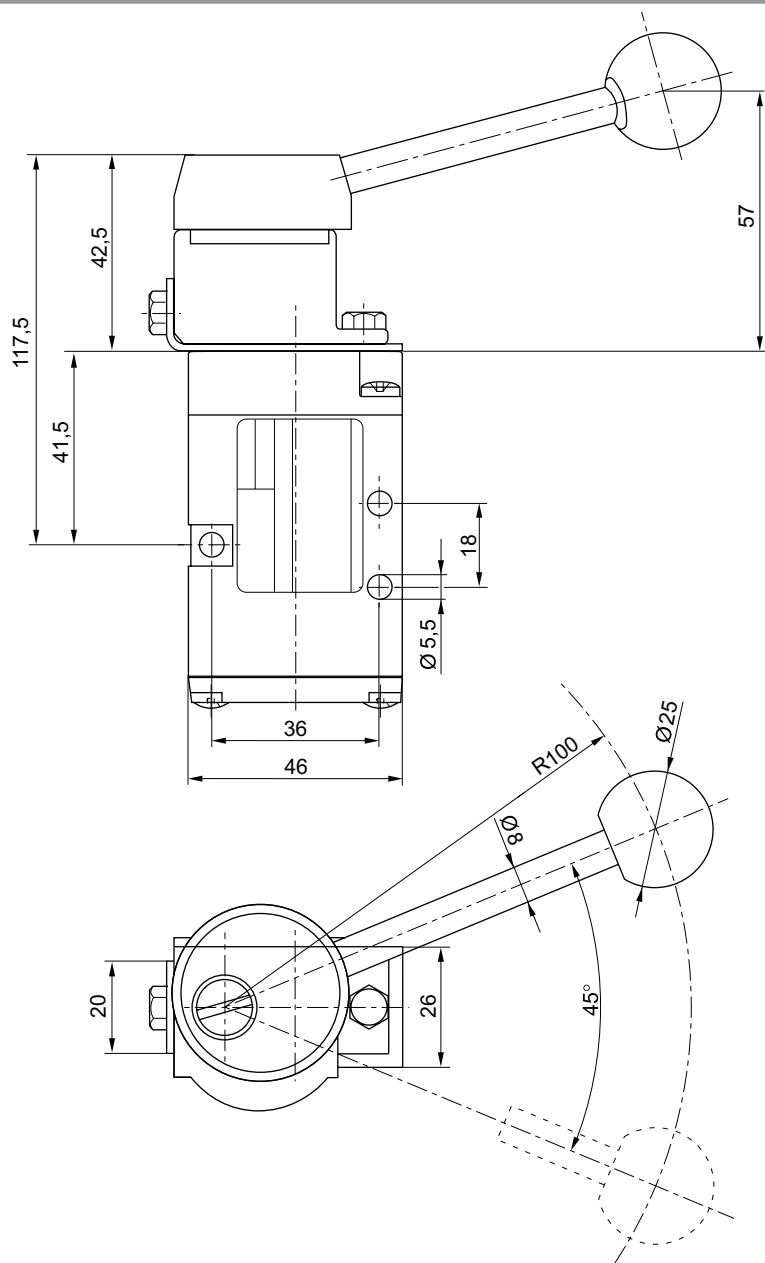
D563_421_b

Dimensions of basic valve apply to all types of actuation.

5/2-directional valve, Series CD04

► Qn= 900 l/min ► pipe connection ► Compressed air connection output: G 1/8

Dimensions, Fig. 5



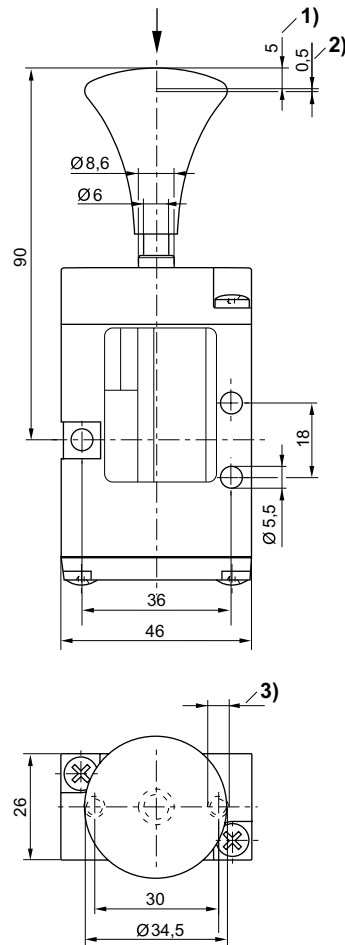
00127341

Directional valves ► Mechanically operated

5/2-directional valve, Series CD04

► Qn= 900 l/min ► pipe connection ► Compressed air connection output: G 1/8

Dimensions, Fig. 6



D563_422_a

1) Stroke 2) Overstroke 3) Ø 4.5 - 12 mm deep